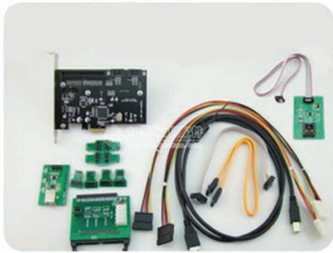


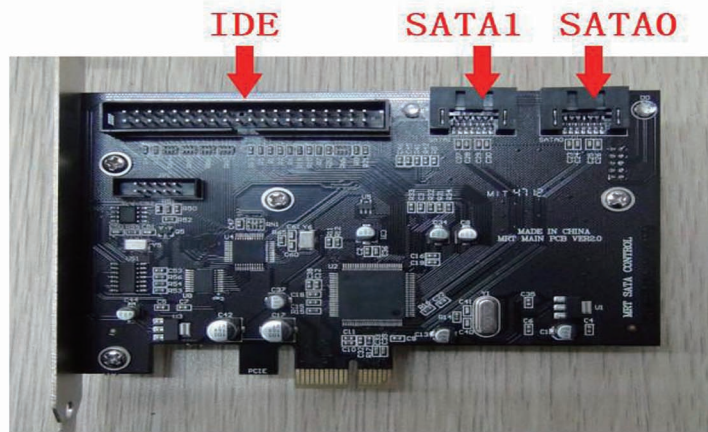
Created by the innovators at MRT Laboratory, MRT Pro is a combination of software and hardware solutions that specializes in both hard disk drive (HDD) repair and data recovery. Comprised of two parts, the hardware aspect has a special MRT SATA controller card, which allows two HDDs to be repaired simultaneously. Through the advanced hardware technology, the repair of HDDs (such as bad sector repair), recovery of firmware can be conducted at factory mode where firmware and microcode is accessible.



MRT PRO Powerful Tools for HDD Repair

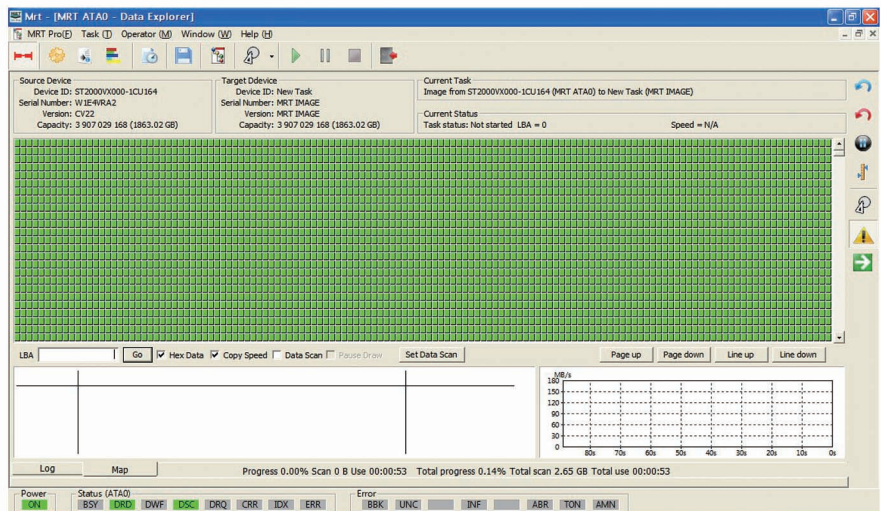
Technical Features:

- Support of all IDE (CE, CF, ZIF), SATA (MICRO SATA) interface HDDs
- Support 1.8 inch, 2.5 inch, and 3.5 HDDs with a capacity of up to 4TB
- Provide two SATA ports and one IDE port
- Support the recovery of corrupted firmware in HDDs
- Support the ability to unlock hard drive password (i.e. decrypt the hard drive)
- Support data recovery and HDDs repair due to failed read/write heads
- Support virtual head map technology
- Support the repair of HDDs with physically-damaged sectors
- Support disk imaging, image with head map, with speeds of up to 120M/sec (theoretical speed up to 150M /sec).



Disk Imaging Interface:

The data recovery module provides enhanced functions of disk imaging and expansion of file systems. In disk imaging, MRT Pro provides a mechanism for handling bad tracks, and therefore can copy files from HDDs containing a large number of bad tracks. The MRT controller card is based on the PCIE interface, and provides support for SATA 2.0; the theoretical maximum transfer speed is up to 150MB/sec. It solves the congestion problem of other similar PCI devices due to insufficient bandwidth; it doubled the speed of the product based on PCI66M.



MRT Laboratory

Address: Desheng Building Room 1406
96 Huangxiaohu Road, Jiangnan District
Wuhan, Hubei Province
China

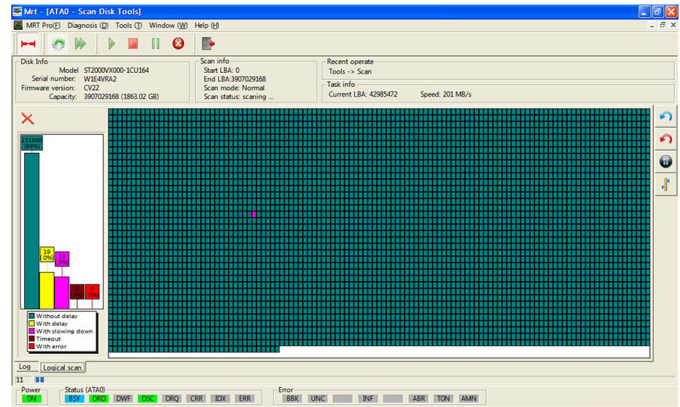
TEL: +86-27-82621261
Website: <http://www.mrtlab.com/>
Email: sales@mrtlab.com
(North & South America)
service@mrtlab.com
(other areas)
MSN: mrtpro@outlook.com
QQ: 939601172

Currently, MRT software supports the following HDD families of products:

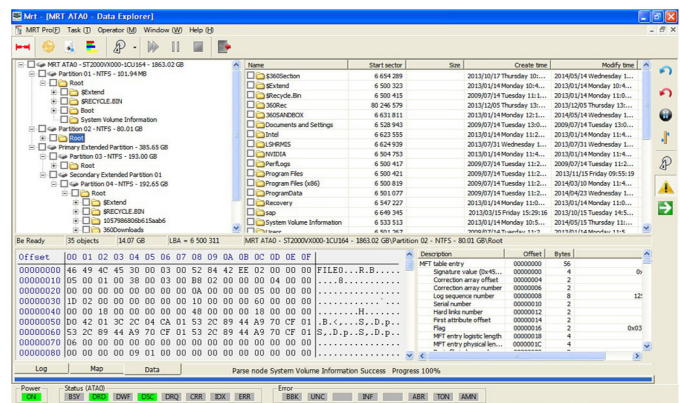
- Western Digital
- Seagate
- Hitachi (including the original series and the newer ARM series)
- Toshiba
- Fujitsu
- Samsung
- Maxtor

The software function with the latest Data Explorer tools includes, but is not limited to, disk imaging, imaging with head map, and the ability to explore documents.

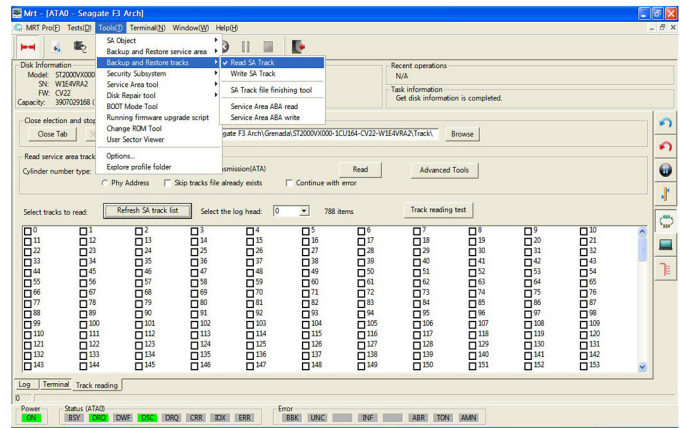
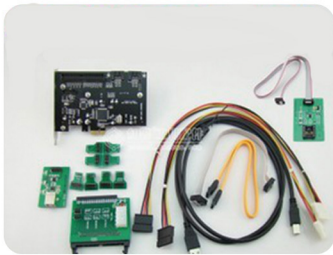
Scan Disk Tools Interface:
This feature provides disk scan and other common tools. For example, disk surface test, and disk information look-up.



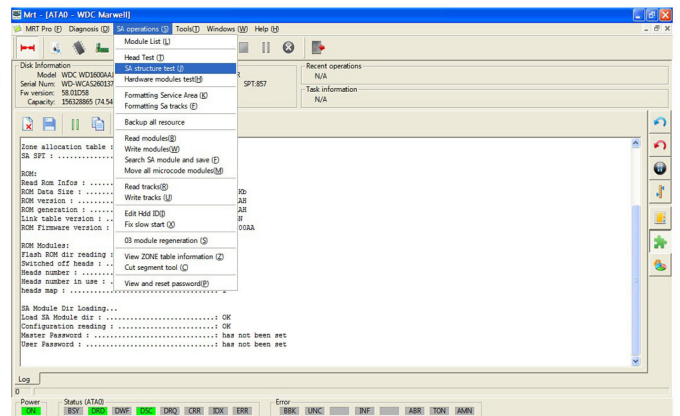
Data Explorer Interface:
The MRT DR module allows direct data extraction from the HDDs being repaired.



Seagate HDD Firmware Repair Interface:
MRT creates unique tools to repair Seagate bad sectors, a leading technology in the data recovery field.



Western Digital HDD Firmware Repair Interface:
The MRT Western Digital HDD firmware repair tool provides robust firmware recovery functions, and greatly enhanced features compared to competitive products.



MRT Laboratory

Address: Desheng Building Room 1406
96 Huangxiaohu Road, Jiangan District
Wuhan, Hubei Province
China

TEL: +86-27-82621261

Website: <http://www.mrtlab.com>

Email: sales@mrtlab.com

(North & South America)
service@mrtlab.com
(other areas)

MSN: mrtpro@outlook.com

QQ: 939601172